

# WESTMINSTER

1 9 9 0



LOOK BOOK 2023

Quality, Style, Value, Service: These are the very foundations of our company philosophy. They are the basis for every decision we make. The guiding force that has determined the company and its products has been a commitment to these core values.

We have achieved success through consistency and investment, both in products and people. Growth, change and innovation are the qualities that define Westminster.

We, as a company, are constantly inspired to embrace new ideas and whilst we are always looking forward, our past is firmly rooted in tradition. We will never forget the value of simple, functional and comfortable furniture.

## Index

Fabrics 04

Dining 08

Lounging 18

Weave 30

Special Order Furniture 38

Accessories 46

Pergolas 56

Parasols 62

All Weather Covers 70

## Sunbrella® Fabrics

We are proud to engineer our garden furniture with Sunbrella® Natte. Sunbrella® has grown to be trusted as the outdoor fabric provider that is guaranteed to last against the elements. It is fade, stain and UV resistant, backed with a 5-year guarantee. Made of 100% solution-dyed acrylic fibres, our fabric offers a luxurious look and soft texture.

The most powerful feature of this fabric is its robust quality to withstand water, rain, and heavy downpours. This means it can be left outside all year-round, without the need to cover or manoeuvre. The porous open-cell Quick Dry Foam structure allows water to drain very rapidly and fresh air to circulate freely. During the aftermath of stormy conditions, followed by sunshine, the furniture can be ready to use again within as little as 30 minutes.



Slate Natte



Stone Natte



Blue Natte  
Special Order



Beige Natte  
Special Order



Grey Natte  
Special Order

## Sunbrella® Maintenance

Even in the harshest of climates, Sunbrella® provides years of enjoyment. The fabric is completely weather resistant and can be simply cleaned with water when needed. To remove more stubborn stains, use a mild solution of water and bleach, followed by careful use of a high-pressure washer if needed. Westminster also recommends our Fabric Cleaner and Protector to keep your fabrics in pristine condition, long after your purchase.



### Easy Care

Our fabric furniture is considered low maintenance. Spills and stains can be cleaned using soapy water, or a mild bleach solution for more stubborn stains.



### Weather Ready

Our Quick Dry Foam technology let's water pass through quickly, meaning your furniture will be dry and ready-to-use again in no time.



### Fade Resistant

Our products are upholstered using 100% solution dyed acrylic. This mean that the fabric yarns are coloured all the way through, creating a more fade-resistant material.



### Built to last

Our Sunbrella® Natte fabric carries a 5-year guarantee, covering any manufacturing faults or defects within the material and quick dry foam.



## Dining

Elevate your outside space with our wide selection of all-weather dining sets. Every product in our dining range is expertly designed for the perfect balance of style and comfort, whilst also being completely weatherproof and UV resistant. This even includes our fabric pieces, which use the latest Quick Dry Foam technology & Sunbrella® fabric.

Our modern garden dining sets can be mixed and matched to produce your ideal vision. Whether you are searching for a round or rectangular table with 4, 6, 8, or 10 chairs, we have suitable outdoor dining sets to suit every occasion.

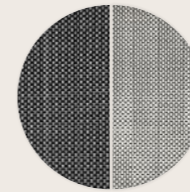


## Materials



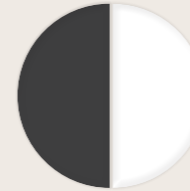
### Sunbrella® Fabric

Westminster use Sunbrella®, a fabric made of 100% solution dyed acrylic fibres with pigmentation added prior to extrusion. Natte fabric offers a lush look and soft feel, all woven in a basket style pattern.



### Sling

Sling fabric is water resistant, easy to maintain, and does not tear or crack easily. Our sling is flexible, soft, and comfortable, ideal for the creation of comfortable and stylish garden chairs.



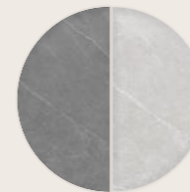
### Powder Coated Aluminium

Aluminium is a proven lightweight material which is extremely strong and durable. The aluminium is powder coated to prevent oxidation and ensure years of outdoor use.



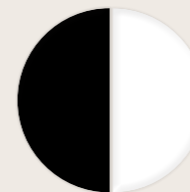
### Quick Dry Foam

Advanced, high-performance foam designed specifically for outdoors. The porous open-cell structure allows water to drain rapidly and fresh air to circulate freely, allowing the fabric to dry in record time.



### Ceramic & Enamelled Glass Tops

Ceramic and enamelled glass table tops are constructed to ensure maximum strength and durability. They are highly resistant to scratches, UV, extreme temperatures, and very easy to clean.



### Moulded Seat (Benna Armchair)

Made from glass fibre reinforced polypropylene, this low maintenance, velvety-smooth material is easy to clean and epitomises modern outdoor living. Legs are made from Iroko hardwood.







£199



£250



£295



£595

### Ocean Stacking Armchair

H 88cm Arm H 65cm W 58cm D 62cm WT 3kg

Double sling with Quick Dry Foam.  
Counter sunk armrests.  
Powder coated aluminium frame.

**OCEANSTA-124** - Charcoal/Slate Sling  
**OCEANSTA-123** - White/Stone Sling

### Edge Stacking Armchair

H 94cm Arm H 64cm W 58cm D 63cm WT 5kg

Sunbrella® fabric with Quick Dry Foam.  
Special order fabrics: Blue, Grey, Beige Natte.  
Includes removable arm sleeves in Sunbrella® fabric.

**EDGESTAR-081** - Charcoal/Slate Natte  
**EDGESTAR-080** - White/Stone Natte

### Benna Armchair

H 82cm Seat H 46cm W 59cm D 62cm

Velvety texture and keyhole design.  
Oiled Iroko hardwood timber legs.  
Ergonomic back support for added comfort.

**BENNARMC-I-01-103** - White  
**BENNARMC-I-09-103** - Black

### Mirage Bar Chair

H 114cm W 62cm D 58cm WT 7kg

Strong back support and a structure to rest your feet.  
Sunbrella® fabric with Quick Dry Foam.  
Special order fabric colours: Blue, Grey, Beige Natte.

**DIV-DB-01-W-081** - Charcoal/Slate Natte  
**DIV-DB-01-W-080** - White/Stone Natte



£110



£110

### Ocean & Edge Stacking Armchair Cushion

Seat W 44cm L 46cm Back W 44cm L 53cm

Extra cushion for our Ocean & Edge dining chairs.  
Sunbrella® fabric with Quick Dry Foam.

**U800-275-079** - Charcoal/Slate  
**U800-275-078** - Stone/Beige

### Mirage Armchair & Bar Chair Cushion

Seat W 51/42cm L 49cm Back W 46cm L 43cm

Extra cushion for our Mirage dining & bar chairs.  
Sunbrella® fabric with Quick Dry Foam.

**U800-276-079** - Charcoal/Slate  
**U800-276-078** - Stone/Beige



£1,995

### Design Dining Table 220cm

H 74cm W 220cm D 100cm WT 50kg

Modern, striking design with slatted, parallel lines.  
Aluminium frame - White or Charcoal.  
Low maintenance.

**DES220C** - Charcoal  
**DES220W** - White



£2,695

### Design Dining Table 280cm

H 74cm W 280cm D 100cm WT 60kg

Modern, striking design with slatted, parallel lines.  
Aluminium frame - White or Charcoal.  
Low maintenance.

**DES280C** - Charcoal  
**DES280W** - White



£395



£495

### Mirage Armchair

H 85cm Arm H 65cm W 59cm D 61cm WT 5kg

Sunbrella® fabric with Quick Dry Foam.  
Special order fabric colours: Blue, Grey, Beige Natte.  
Frame made from powder coated aluminium.

**MIR118** - Charcoal/Slate Natte  
**MIR117** - White/Stone Natte

### Spirit Armchair

H 84cm Arm H 67cm W 66cm D 62cm WT 8kg

Unique parallel stitches, stretching across the backrest.  
Sunbrella® fabric with Quick Dry Foam.  
Special order fabric colours: Blue, Grey, Beige Natte.

**SPIRDINI-081** - Charcoal/Slate Natte  
**SPIRDINI-080** - White/Stone Natte



£1,295

### Design Bar Table 160cm

H 99cm W 160cm D 66cm WT 34kg

Aluminium frame.  
Modern slatted design.  
Low maintenance.

**DESBT160C** - Charcoal  
**DESBT160W** - White





£695

Pacific Square Dining Table 90cm

H 74cm W 90cm D 90cm WT 22kg

Aluminium frame - White or Charcoal.  
Ceramic table top in Slate or Stone.  
Comes with a parasol hole.

**PACIFIC90-081F** - Charcoal **PACIFIC90-081T** - Slate Top  
**PACIFIC90-080F** - White **PACIFIC90-080T** - Stone Top



£1,295

Pacific Dining Table 225cm

H 74cm W 225cm D 90cm WT 60kg

Aluminium frame - White or Charcoal.  
Ceramic table top in Slate or Stone.  
Ceramic top comes in 3 pieces.

**PACIFIC225-081F** - Charcoal **PACIFIC225-081T** - Slate Top  
**PACIFIC225-080F** - White **PACIFIC225-080T** - Stone Top



£1,995

Pacific Dining Table 300cm

H 74cm W 300cm D 90cm WT 90kg

Aluminium frame - White or Charcoal.  
Ceramic table top in Slate or Stone.  
Ceramic top comes in 4 pieces.

**PACIFIC300-081F** - Charcoal **PACIFIC300-081T** - Slate Top  
**PACIFIC300-080F** - White **PACIFIC300-080T** - Stone Top



£1,395

Pacific Round Dining Table 150cmØ

H 74cm W 150cmØ WT 65kg

Aluminium frame - White or Charcoal.  
Ceramic table top (in 2 pieces) in Slate or Stone.  
Comes with a parasol hole.

**PACIFIC150-081F** - Charcoal **PACIFIC150-081T** - Slate Top  
**PACIFIC150-080F** - White **PACIFIC150-080T** - Stone Top



£1,795

Pacific Round Dining Table 180cmØ

H 74cm W 180cmØ WT 70kg

Aluminium frame - White or Charcoal.  
Ceramic table top (in 2 pieces) in Slate or Stone.  
Comes with a parasol hole.

**PACIFIC180-081F** - Charcoal **PACIFIC180-081T** - Slate Top  
**PACIFIC180-080F** - White **PACIFIC180-080T** - Stone Top

- Pacific Slate ceramic tops can be purchased with White or Charcoal frames.  
- Pacific Stone ceramic tops can be purchased with White or Charcoal frames.



# Lounging

Choose from a range of products in our lounge collection, which are sure to transform your outdoor aesthetic, including outdoor sofas, lounge armchairs and sunloungers.

No matter what shape your garden is, we have a contemporary lounge set that will suit your needs. We also have an array of colours and sizes available, the options are limitless. No matter what your chosen material is, your furniture will be completely weatherproof and can be left outside all year round.

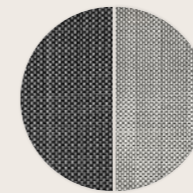


# Materials



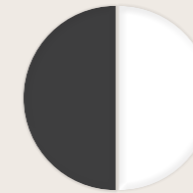
## Sunbrella® Fabric

Westminster use Sunbrella®, a fabric made of 100% solution dyed acrylic fibres with pigmentation added prior to extrusion. Natte fabric offers a lush look and soft feel, all woven in a basket style pattern.



## Sling

Sling fabric is water resistant, easy to maintain, and does not tear or crack easily. Our sling is flexible, soft, and comfortable, ideal for the creation of comfortable and stylish garden chairs.



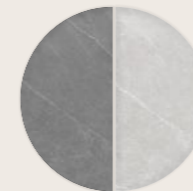
## Powder Coated Aluminium

Aluminium is a proven lightweight material which is extremely strong and durable. The aluminium is powder coated to prevent oxidation and ensure years of outdoor use.



## Quick Dry Foam

Advanced, high-performance foam designed specifically for outdoors. The porous open-cell structure allows water to drain rapidly and fresh air to circulate freely, allowing the fabric to dry in record time.



## Ceramic & Enamelled Glass Tops

Ceramic and enamelled glass table tops are constructed to ensure maximum strength and durability. They are highly resistant to scratches, UV, extreme temperatures, and very easy to clean.







£595



£995



£1,195



£1,495

### Cloud Armchair

H 75cm Seat H 43cm W 79cm D 77cm WT 8kg

Striking, chunky PU leather straps to the rear.  
Special order fabric colours: Blue, Grey, Beige Natte.  
Includes removable arm sleeves in Sunbrella® fabric.

**CLOUD118** - Charcoal/Slate Natte  
**CLOUD117** - White/Stone Natte

### Cloud Sofa

H 75cm Seat H 43cm W 150cm D 77cm WT 16kg

Striking, chunky PU leather straps to the rear.  
Special order fabric colours: Blue, Grey, Beige Natte.  
Includes removable arm sleeves in Sunbrella® fabric.

**CLOU2SEA-081** - Charcoal/Slate Natte  
**CLOU2SEA-080** - White/Stone Natte

### Excel Middle Sofa

H 80cm W 80cm D 91cm WT 13kg

Upholstered with distinctive, quilted fabric to the rear of the sofa.  
Sunbrella® fabric with Quick Dry Foam.  
Special order fabric colours: Blue, Grey, Beige Natte.

**EXCEMIDD-081** - Charcoal **U800-203-079** - Slate  
**EXCEMIDD-080** - White **U800-203-078** - Stone

### Excel Corner Sofa

H 80cm W 91cm D 91cm WT 18kg

Upholstered with distinctive, quilted fabric to the rear of the sofa.  
Sunbrella® fabric with Quick Dry Foam.  
Special order fabric colours: Blue, Grey, Beige Natte.

**EXCECORN-081** - Charcoal **U800-204-079** - Slate  
**EXCECORN-080** - White **U800-204-078** - Stone



£3,495



£995



£795



£1,095

### Chill Lounge Set

H 69cm Seat H 42cm W 260cm D 95cm WT 90kg

Spacious corner sofa with extra deep seating.  
Sunbrella® fabric with Quick Dry Foam.  
Special order fabric colours: Blue, Grey, Beige Natte.

**CHILSET-081** - Charcoal/Slate Natte  
**CHILSET-080** - White/Stone Natte

### Chill Middle Sofa

H 69cm Seat H 42cm W 70cm D 95cm WT 16kg

Extra middle seat to expand the Chill Lounge set.  
Sunbrella® fabric with Quick Dry Foam.  
Special order fabric colours: Blue, Grey, Beige Natte.

**CHILMID-081** - Charcoal/Slate Natte  
**CHILMID-080** - White/Stone Natte

### Sahara Middle Sofa

H 71cm Seat H 38cm W 70cm D 90cm WT 16kg

Integrated cushion design.  
Sunbrella® fabric with Quick Dry Foam.  
Special order fabric colours: Blue, Grey, Beige Natte.

**SAHM111** - Slate Natte  
**SAHM110** - Stone Natte

### Sahara Corner Sofa

H 71cm Seat H 38cm W 90cm D 90cm WT 23kg

Integrated cushion design.  
Sunbrella® fabric with Quick Dry Foam.  
Special order fabric colours: Blue, Grey, Beige Natte.

**SAHC111** - Slate Natte  
**SAHC110** - Stone Natte



£4,435



£1,695



£95

### Cube Corner Lounge Set

H 78cm Seat H 42cm W 250cm D 258cm WT 78kg

Contemporary, parallel stitching running across the fabric.  
Sunbrella® fabric with Quick Dry Foam.  
Special order fabric colours: Blue, Grey, Beige Natte.

2 Seater R - **CUBE2SER-088** - Slate Natte **CUBE2SER-087** - Stone Natte  
3 Seater R - **CUBE3SER-088** - Slate Natte **CUBE3SER-087** - Stone Natte  
Middle - **CUBECENT-088** - Slate Natte **CUBECENT-087** - Stone Natte  
Ottoman - **CUBEOTTO-088** - Slate Natte **CUBEOTTO-087** - Stone Natte  
**NOT SOLD SEPARATELY**

### Sahara Curved Corner Sofa

H 71cm Seat H 38cm W 196cm D 99cm WT 56kg

Integrated cushion design.  
Sunbrella® fabric with Quick Dry Foam.  
Special order fabric colours: Blue, Grey, Beige Natte.

**SAHS111** - Slate Natte  
**SAHS110** - Stone Natte

### Bolster Lounge Cushion

W 15cm L 65cm WT 1kg

Ideal for use with any of our fabric lounge products.  
Sunbrella® fabric with Quick Dry Foam.  
Available in Charcoal/Slate or Stone/Beige.

**DIV-CU-JO-13-02** - Charcoal/Slate  
**DIV-CU-JO-13-01** - Stone/Beige



£895



£1,195



£995



£1,495

### Arctic Middle Sofa

H 70cm Seat H 41cm W 70cm D 96cm WT 20kg

Removable, quilted cushions, adding a touch of luxury. Sunbrella® fabric with Quick Dry Foam. Special order fabric colours: Blue, Grey, Beige Natte.

**ARC317C** - Charcoal/Slate Natte

**ARC317W** - White/Stone Natte

### Arctic Corner Sofa

H 70cm Seat H 41cm W 96cm D 96cm WT 27kg

Removable, quilted cushions, adding a touch of luxury. Sunbrella® fabric with Quick Dry Foam. Special order fabric colours: Blue, Grey, Beige Natte.

**ARC217C** - Charcoal/Slate Natte

**ARC217W** - White/Stone Natte

### Tomorrow Middle Sofa

H 74cm Seat H 35cm W 80cm D 90cm WT 25kg

Striking, aluminium frame, featuring chunky stripes. Sunbrella® fabric with Quick Dry Foam. Special order fabric colours: Blue, Grey, Beige Natte.

**TOMOMID-004** - Charcoal **U800-203-079** - Slate Natte

**TOMOMID-001** - White **U800-203-078** - Stone Natte

### Tomorrow Corner Sofa

H 74cm Seat H 35cm W 90cm D 90cm WT 40kg

Striking, aluminium frame, featuring chunky stripes. Sunbrella® fabric with Quick Dry Foam. Special order fabric colours: Blue, Grey, Beige Natte.

**TOMOCOR-004** - Charcoal **U800-204-079** - Slate Natte

**TOMOCOR-001** - White **U800-204-078** - Stone Natte



£1,895



£1,895



£1,295



£1,295

### Arctic 2 Seater Left Sofa

H 70cm Seat H 41cm W 163cm D 96cm WT 39kg

Removable, quilted cushions, adding a touch of luxury. Sunbrella® fabric with Quick Dry Foam. Special order fabric colours: Blue, Grey, Beige Natte.

**ARC117LC** - Charcoal/Slate Natte

**ARC117LW** - White/Stone Natte

### Arctic 2 Seater Right Sofa

H 70cm Seat H 41cm W 163cm D 96cm WT 39kg

Removable, quilted cushions, adding a touch of luxury. Sunbrella® fabric with Quick Dry Foam. Special order fabric colours: Blue, Grey, Beige Natte.

**ARC117RC** - Charcoal/Slate Natte

**ARC117RW** - White/Stone Natte

### Tomorrow Armchair

H 74cm Seat H 35cm W 90cm D 90cm WT 35kg

Striking, aluminium frame, featuring chunky stripes. Sunbrella® fabric with Quick Dry Foam. Special order fabric colours: Blue, Grey, Beige Natte.

**TOMOARM-004** - Charcoal **U800-226-079** - Slate Natte

**TOMOARM-001** - White **U800-226-078** - Stone Natte

### Grand Sahara Middle

H 73cm Seat H 43cm W 90cm D 105cm WT 25kg

Extra deep seating with aluminium frame in white or charcoal. Sunbrella® fabric with Quick Dry Foam. Special order fabric colours: Blue, Grey, Beige Natte.

**GSM101CS** - Charcoal/Slate Natte

**GSM101WS** - White/Stone Natte



£95

### Bolster Lounge Cushion

W 15cm L 65cm WT 1kg

Ideal for use with any of our fabric lounge products. Sunbrella® fabric with Quick Dry Foam. Available in Charcoal/Slate or Stone/Beige.

**DIV-CU-JO-13-02** - Charcoal/Slate

**DIV-CU-JO-13-01** - Stone/Beige



£1,895

### Grand Sahara Corner Sofa

H 73cm Seat H 43cm W 105cm D 105cm WT 40kg

Extra deep seating with aluminium frame in white or charcoal. Sunbrella® fabric with Quick Dry Foam. Special order fabric colours: Blue, Grey, Beige Natte.

**GSC100CS** - Charcoal/Slate Natte

**GSC100WS** - White/Stone Natte



£1,595

### Grand Sahara Lounge Armchair

H 73cm Seat H 43cm W 100cm D 105cm WT 35kg

Extra deep seating with aluminium frame in white or charcoal. Sunbrella® fabric with Quick Dry Foam. Special order fabric colours: Blue, Grey, Beige Natte.

**GS200CS** - Charcoal/Slate Natte

**GS200WS** - White/Stone Natte



£125

### Arabian Side Table

H 53cm W 33cm D 48cm WT 4kg

Powder coated aluminium - White or Charcoal.  
Lightweight and easily moveable.  
Pairs with any of our Loungers.

**ARAB402** - Charcoal  
**ARAB401** - White



£350

### Design Coffee/Side Table

H 44cm W 90cm D 45cm WT 7kg

Powder coated aluminium - White or Charcoal.  
Can be placed together to create a larger Coffee Table.  
Pairs well with the Tomorrow and Grand Sahara.

**DESCT90C** - Charcoal  
**DESCT90W** - White



£995

### Cloud Lounger

H 35cm W 70cm D 195cm WT 16kg

Aluminium frame - White or Charcoal, with White strapping.  
Sunbrella® fabric with Quick Dry Foam.  
Special order fabric colours: Blue, Grey, Beige Natte.

**CLOULOUN-081** - Charcoal/Slate Natte  
**CLOULOUN-080** - White/Stone Natte



£1,095

### Persian Lounger

H 30cm W 70cm D 195cm WT 25kg

Features an adjustable backrest and integrated wheels for mobility.  
Sunbrella® fabric with Quick Dry Foam.  
Special order fabric colours: Blue, Grey, Beige Natte.

**PER118** - Charcoal/Slate Natte  
**PER117** - White/Stone Natte



£495

### Coast Coffee Table 84cm

H 40cm W 84cm D 84cm WT 6kg

Aluminium frame - White or Charcoal.  
Ceramic Table Top in Slate or Stone.  
Pairs perfectly with any of our Sofas.

**COASCOFF-081** - Charcoal/Slate  
**COASCOFF-080** - White/Stone



£595

### Ocean Coffee Table 120cm

H 40cm W 120cm D 80cm WT 7kg

Aluminium frame - White or Charcoal.  
Enamelled Glass Top in Slate or Stone.  
Pairs perfectly with any of our Sofas.

**OCEANCOF-126** - Charcoal/Slate  
**OCEANCOF-125** - White/Stone



£1,295

### Joy Lounger

H 30cm W 90cm D 213cm WT 25kg

Featuring a unique stripe design. Already includes bolster cushion.  
Sunbrella® fabric with Quick Dry Foam.  
Special order fabric colours: Blue, Grey, Beige Natte.

**JOYLOUNC-129** - Charcoal/Slate/Grey Natte  
**JOYLOUNW-138** - White/Stone/Beige Natte



£1,395

### Tomorrow Lounger

H 30cm W 74cm D 205cm WT 28kg

Aluminium frame with built in wheels.  
Sunbrella® fabric with Quick Dry Foam.  
Special order fabric colours: Blue, Grey, Beige Natte.

**TOMOLOUN-004** - Charcoal **U800-72-079** - Slate Natte  
**TOMOLOUN-001** - White **U800-72-078** - Stone Natte



£995

### Flame Lounge Fire Table 120cm

H 48cm W 120cm D 80cm WT 26kg

Enamelled glass top in Slate or Stone.  
Includes a glass windshield & all-weather cover.  
Central Gas Fire Pit - Gas bottle not included.

**N19989** - Charcoal/Slate  
**N19990** - White/Stone



£1,295

### Blaze Lounge Dining Fire Table 150cm

H 65cm W 150cm D 90cm WT 40kg

Enamelled glass top in Slate or Stone.  
Includes a glass windshield & all-weather cover.  
Central Gas Fire Pit - Gas bottle not included.

**BLAZFLT-081** - Charcoal/Slate  
**BLAZFLT-080** - White/Stone



£1,495

### Arabian Lounger

H 38cm W 90cm D 225cm WT 35kg

Features an adjustable backrest and integrated wheels for mobility.  
Sunbrella® fabric with Quick Dry Foam.  
Special order fabric colours: Blue, Grey, Beige Natte.

**ARAB318** - Charcoal/Slate Natte  
**ARAB317** - White/Stone Natte



£95

### Bolster Lounge Cushion

W 15cm L 65cm WT 1kg

Ideal for use with any of our fabric lounge products.  
Sunbrella® fabric with Quick Dry Foam.  
Available in Charcoal/Slate or Stone/Beige.

**DIV-CU-JO-13-02** - Charcoal/Slate  
**DIV-CU-JO-13-01** - Stone/Beige

## Weave

---

Take a seat and relax with the 'Heritage by Nova' range of outdoor weave dining and lounge sets. Our rattan collection lends itself to a more natural look that is ideal for use in gardens, patios, and even conservatories.

Constructed using a 5mm round weave and aluminium framework, the frames are all-weather and UV-resistant, and offers protection against rust and corrosion during colder months.

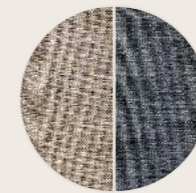


## Materials



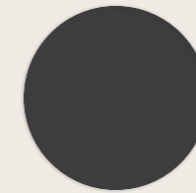
### Weave

Hand woven using a premium Duracore® Polyethylene rattan. Highly flexible, UV and weather resistant, this fibre is designed to be insensitive to temperature differences.



### Fabric

Made from 100% Olefin, which is machine washable and shower-resistant. The cushions are not weatherproof and we recommend storing them away when not in use.



### Powder Coated Aluminium

Aluminium is a proven lightweight material which is extremely strong and durable. The aluminium is powder coated to prevent oxidation and ensure years of outdoor use.



### Glass Tops

Glass table tops are constructed to ensure maximum strength and durability. They are highly resistant to scratches, UV, high/low temperatures, and is very easy to clean.









£399

### Camilla Dining Armchair

H 97cm Arm H 64cm W 60cm D 68cm

Frame made from 100% powder coated aluminium.  
Weave made from weather resistant Duracore Rattan.  
Cushions not to be left outside.

**CAMIDINI-011** - Sand  
**CAMIDINI-012** - Platinum



£750

### Heritage Dining Table 1.35m

H 75cm W 135cmØ

Frame made from 100% powder coated aluminium.  
Weave made from weather resistant Duracore Rattan.  
Has a built in parasol hole.

**HERITAB135-011** - Sand  
**HERITAB135-012** - Platinum



£749

### Luxor Middle Sofa

H 64cm W 60cm D 90cm

Frame made from 100% powder coated aluminium.  
Weave made from weather resistant Duracore Rattan.  
Cushions not to be left outside.

**LUXOMIDD-011** - Sand  
**LUXOMIDD-012** - Platinum



£949

### Luxor Corner Sofa

H 64cm W 90cm D 90cm

Frame made from 100% powder coated aluminium.  
Weave made from weather resistant Duracore Rattan.  
Cushions not to be left outside.

**LUXOCORN-011** - Sand  
**LUXOCORN-012** - Platinum



£995

### Heritage Dining Table 1.8m

H 75cm W 180cmØ

Frame made from 100% powder coated aluminium.  
Weave made from weather resistant Duracore Rattan.  
Has a built in parasol hole.

**HERITAB180-011** - Sand  
**HERITAB180-012** - Platinum



£899

### Heritage Dining Table 2.0m x 1.0m

H 75cm W 200cm D 100cm

Frame made from 100% powder coated aluminium.  
Weave made from weather resistant Duracore Rattan.  
Has a built in parasol hole.

**HERITAB200-011** - Sand  
**HERITAB200-012** - Platinum



£1,299

### Luxor 2 Seat Left / Right Sofa

H 64cm Arm H 50cm W 150cm D 90cm

Frame made from 100% powder coated aluminium.  
Weave made from weather resistant Duracore Rattan.  
Cushions not to be left outside.

**LUXO2SEA-L-011** - Left Sofa Sand **LUXO2SEA-R-011** - Right Sofa Sand  
**LUXO2SEA-L-012** - Left Sofa Platinum **LUXO2SEA-R-012** - Right Sofa Platinum



£599

### Luxor Square Coffee Table

H 35cm W 95cm D 95cm

Frame made from 100% powder coated aluminium.  
Weave made from weather resistant Duracore Rattan.  
Top made from toughened safety glass.

**LUXOCOFF-011** - Sand  
**LUXOCOFF-012** - Platinum



£749

### Heritage Large Storage Box

H 95cm W 168cm D 80cm WT 25kg

Frame made from 100% powder coated aluminium.  
Weave made from weather resistant Duracore Rattan.  
Hydraulic arms to hold the lid open.

**HERICUSH-011** - Sand  
**HERICUSH-012** - Platinum



£1,449

### Madison Sunlounger Set

H 60cm W 73cm D 195cm

Set consists of 2 x sunloungers and 1 x side table.  
Adjustable backrest for maximum comfort.  
Cushions not to be left outside.

**MADILOUN-011** - Sand  
**MADILOUN-012** - Platinum



£999

### Luxor Lounge Chair

H 64cm Arm H 50cm W 120cm D 90cm

Frame made from 100% powder coated aluminium.  
Weave made from weather resistant Duracore Rattan.  
Cushions not to be left outside.

**LUXOLOUN-011** - Sand  
**LUXOLOUN-012** - Platinum



£1,799

### Luxor 3 Seat Sofa

H 64cm Arm H 50cm W 240cm D 90cm

Frame made from 100% powder coated aluminium.  
Weave made from weather resistant Duracore Rattan.  
Cushions not to be left outside.

**LUXO3SEA-011** - Sand  
**LUXO3SEA-012** - Platinum

## Special Order Furniture

Westminster is proud to exclusively offer the beautiful Divano Lounge outdoor furniture collection.

This range is made-to-order, and is available in 5 colour options (slate, stone, grey, blue and beige) with an estimated delivery of 12-16 weeks.

Upholstered with Sunbrella® fabric and quick dry foam, this stunning range is suitable for outdoor use throughout the whole year.

The complete special order collection is ready to view in our flagship showroom in East Grinstead.

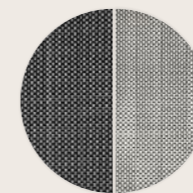


## Materials



### Sunbrella® Fabric

Westminster use Sunbrella®, a fabric made of 100% solution dyed acrylic fibres with pigmentation added prior to extrusion. Natte fabric offers a lush look and soft feel, all woven in a basket style pattern.



### Sling

Sling fabric is water resistant, easy to maintain, and does not tear or crack easily. Our sling is flexible, soft, and comfortable, ideal for the creation of comfortable and stylish garden chairs.



### Powder Coated Aluminium

Aluminium is a proven lightweight material which is extremely strong and durable. The aluminium is powder coated to prevent oxidation and ensure years of outdoor use.



### Quick Dry Foam

Advanced, high-performance foam designed specifically for outdoors. The porous open-cell structure allows water to drain rapidly and fresh air to circulate freely, allowing the fabric to dry in record time.



### Ceramic & Enamelled Glass Tops

Ceramic and enamelled glass table tops are constructed to ensure maximum strength and durability. They are highly resistant to scratches, UV, extreme temperatures, and very easy to clean.



Dope



Hot Tub



Bloin



Tiara





## Accessories

---

Add personality and charm to your garden with our variety of high-quality outdoor accessories. Choose from a wide range of products including coffee tables, lounge fire pits, quilted poufs and cushion boxes.

New for our 2023 collection, we have added a selection of outside lights, from hanging festoon bulbs to stand alone lanterns. We also offer a range of vibrant beanbags to add a pop of colour and character to any space.



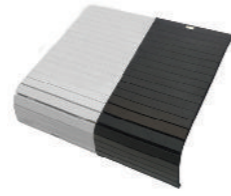








£60



£175



£110



£110

### 3 In 1 Fabric Cleaner, Restorer & Protector

This product comes with:

- 750ml bottle of cleaner
- 750ml bottle of protector
- 2 scrubbing pads
- 1 pad holder
- 3 application cloths

FPCK31

### Aluminium Multipurpose Tray

W 40cm L 88cm WT 5kg

Multifunctional slatted tray. Made with powder coated aluminium - Charcoal or White. The perfect accessory for Sofas, Ottomans & Loungers.

- MUL102 - Charcoal
- MUL101 - White

### Ocean & Edge Stacking Armchair Cushion

Seat W 44cm L 46cm Back W 44cm L 53cm

Extra cushion for our Ocean & Edge dining chairs. Sunbrella® fabric with Quick Dry Foam.

- U800-275-079 - Charcoal/Slate
- U800-275-078 - Stone/Beige

### Mirage Armchair & Bar Chair Cushion

Seat W 51/42cm L 49cm Back W 46cm L 43cm

Extra cushion for our Mirage dining & bar chairs. Sunbrella® fabric with Quick Dry Foam.

- U800-276-079 - Charcoal/Slate
- U800-276-078 - Stone/Beige



£125



£250



£95

### Quilted Scatter Cushions (pack of 2)

H 45cm W 45cm D 10cm WT 1kg

Made with Sunbrella® Natte fabric. Stripe cushion is not quilted. Codes below begin with U800-39-

- 079 - Slate
- 068 - Beige
- 097 - Blue
- 109 - Grey
- 072 - Natural
- 101 - Lime
- 105 - Orange
- 078 - Stone
- 034 - Turquoise
- 089 - Yellow
- 39ST - Stripe

### Quilted Pouf

H 50cm W 45cm D 45cm WT 5kg

Made with Sunbrella® Natte fabric. Stripe pouf is not quilted. Codes below begin with POUFQUIL-

- 079 - Slate
- 068 - Beige
- 097 - Blue
- 109 - Grey
- 072 - Natural
- 101 - Lime
- 105 - Orange
- 078 - Stone
- 034 - Turquoise
- 089 - Yellow
- 093 - Stripe

### Bolster Lounge Cushion

W 15cm L 65cm WT 1kg

Ideal for use with any of our fabric lounge products. Sunbrella® fabric with Quick Dry Foam. Available in Charcoal/Slate or Stone/Beige.

- DIV-CU-JO-13-02 - Charcoal/Slate
- DIV-CU-JO-13-01 - Stone/Beige



£149.99

### Scatter & Pouf Colours:



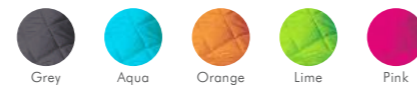
### Quilted B-Bag

H 94cm W 99cm D 80cm WT 9kg

Includes a black storage jacket, perfect for storing away. All fabric colours are fade-resistant, even in direct sunlight. Fabric is double-stitched for extra durability.

- EL0077 - Grey
- EL0071 - Orange
- EL0074 - Aqua
- EL0070 - Lime
- EL0073 - Pink

### Quilted B-Bag Colours:





£79.99



£49.99

### B-Bulb +

H 55cm W 30cm D 30cm WT 1kg

Introducing the new B-bulb +, where elegance, design and brightness come together to make an iconic light. Indoor and outdoor use. Portable, long life and rechargeable via USB.

EL0345 - Large

### B-Bulb

H 33cm W 15cm D 15cm WT 0.5kg

Introducing the new B-bulb, where elegance, design and brightness come together to make an iconic light. Indoor and outdoor use. Portable, long life and rechargeable via USB.

EL0346 - Small



£169.99



£249.98

### B-Bulb Table

H 61cm W 52cm D 52cm WT 8kg

A side table, specially designed to hold our B-Bulb + light. When fitted together, a simple, contemporary and stylish outdoor accessory is created.

EL0472

### B-Bulb Table & B-Bulb +

H 61cm W 52cm D 52cm WT 9kg

A side table, specially designed to hold our B-Bulb + light. When fitted together, a simple, contemporary and stylish outdoor accessory is created.

EL0345 - B-Bulb +  
EL0472 - B-Bulb Table



£49.99



£225

### B-Bulb Festoon Lights

H 10cm (per bulb) W 5cm (per bulb) L 500cm

A bright idea for outdoor spaces. B-bulb Connect is the fun, stylish and practical way to add a touch of sparkle to your evenings. Connect up to 3 sets and select your brightness. 10 bulbs per set.

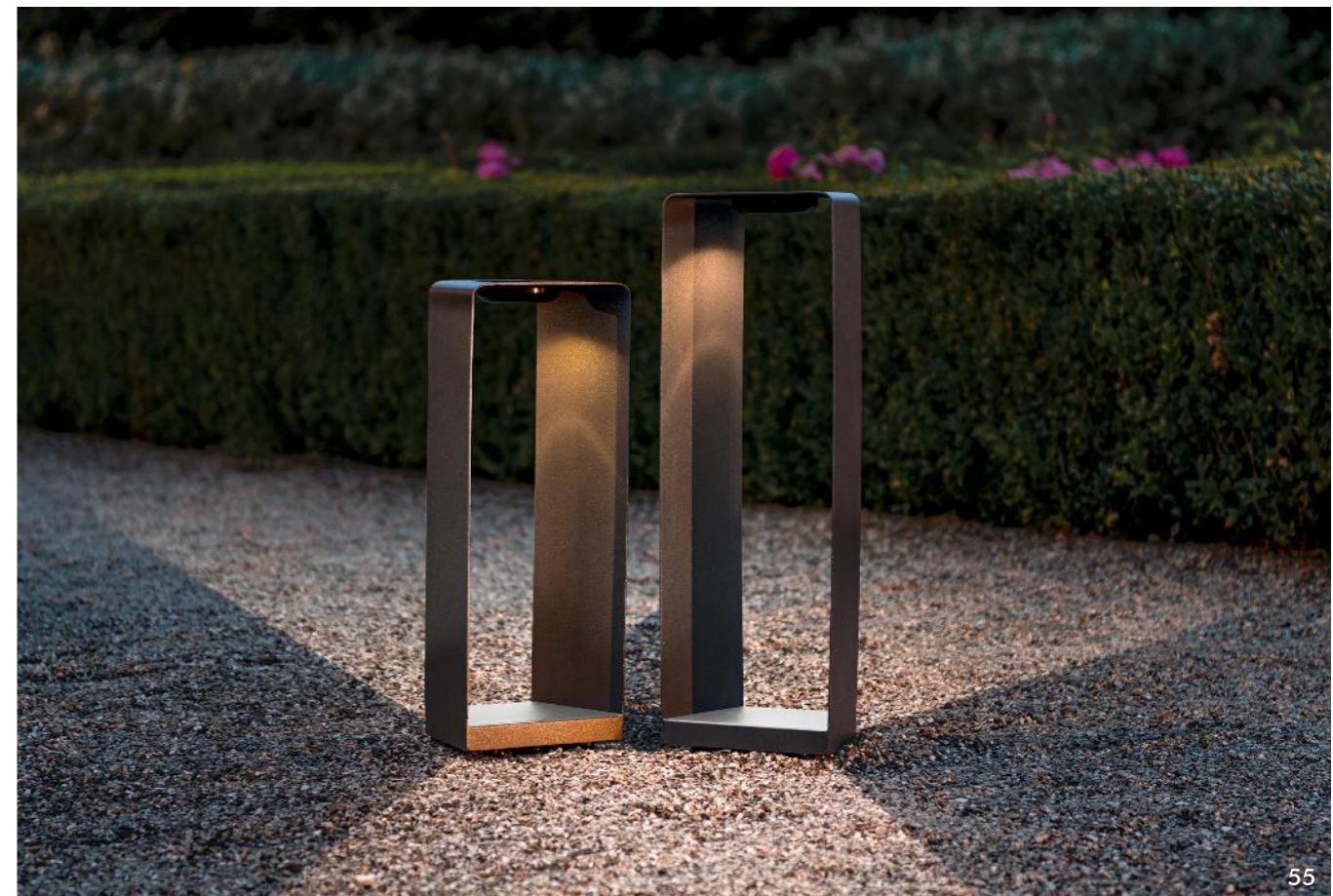
EL0507

### Rimini Solar Lights (set of 2)

Small - H 52cm W 20cm D 15cm WT 3kg  
Large - H 62cm W 20cm D 15cm WT 3kg

Each has a solar panel on top, which turns the rays it collects in the day, into beautiful soft lighting when switched on. They cast atmospheric shadows across your lounging area.

AR9939



# Pergolas

As well as creating a stunning aesthetic in any outside space, our Summit aluminium pergola also comes with several advanced features for added practicality. The tilting roof louvres can be controlled by a simple handle mechanism, so you can effortlessly switch between a sheltered space or an open roof, allowing sunlight to come flooding in. The shuttered roof also has integrated drainage channels, to divert excess rainwater down specially engineered passages inside each leg.

We also offer a range of accessories available to purchase separately, including blind cassettes, pergola wall louvres and solar-powered LED roof louvres. This enables you to achieve a tailored alfresco vision by customising your outside space exactly how you desire.

This Summit Pergola is a winner of the Red-Dot design award, demonstrating just how stylish, practical and contemporary it really is. Perfectly matched with any of our dining, lounge or sofa ranges, this product is sure to take your outdoor living experience to the next level.



## Features



### Adjustable Roof

Thanks to the tilting louvres, you can switch between a closed, sheltered space and an open top which allows sunlight to come flooding in.



### Wall Louvres

Louvre side walls can be purchased individually. Each side takes up to 3 louvres and can be used in any combination required. The Wall louvres are fixed, they cannot be opened or closed.



### Zip Blinds

Pull down blind cassettes with zip system side frames available to purchase individually. The Summit Pergola's can take up to 4 blind cassettes, except for the 6mx3m Pergola which can take up to 6.



### Solar Powered LED Roof Louvre

Add a touch of class and sparkle to your evenings with the solar powered Summit LED roof Louvre, an upgraded replacement for the standard louvre roof component.

## Summit Pergola Disclaimer

When assembly of the Summit Pergola frame is accompanied with blinds and louvre walls, the floor must be completely level or the 4 leg positions must be completely level. If the floor is not the blinds will not work correctly.

Westminster cannot accept responsibility if the Pergola is moved or modified in anyway. If Blinds/Louvres are included in the assembly these will be fitted and tested by Westminster.

Please Note – Most patios are angled to allow water to flow so a packer will therefore be required. We cannot be responsible for an uneven floor/patio. At the point of delivery/assembly a signature (POD) will be required by the recipient which confirms that the delivery/assembly process has been completely successful & without issue.





£3,795



£3,995



£375



£425

### Summit Pergola 3.0m x 3.6m

H 251cm W 304cm D 365cm WT 194kg

Floor area needs to be flat and level. Price is for frame only. Legs can be cut down to reduce the roof height as needed.\*  
\*Cutting down the legs must be carried out by the customer.  
Assembly service available. £495 per Pergola  
**WS-PERG100** - Charcoal

### Summit Pergola 3.0m x 4.0m

H 251cm W 396cm D 304cm WT 205kg

Floor area needs to be flat and level. Price is for frame only. Legs can be cut down to reduce the roof height as needed.\*  
\*Cutting down the legs must be carried out by the customer.  
Assembly service available. £495 per Pergola  
**WS-PERG102** - Charcoal

### Summit Louvre 1.0m

H 238cm W 93cm D 12cm WT 17kg

To fit 3.0m sides on the Summit Pergola.  
For Summit Pergola - all 4 sides fit up to 3 louvres and can be used in any combination required.  
Not compatible with the Wall Mounted Pergola.  
**WS-LOUVC-1** - Charcoal

### Summit Louvre 1.2m

H 238cm W 113cm D 12cm WT 20kg

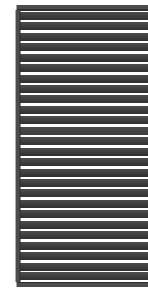
To fit 3.6m sides on the Summit Pergola.  
For Summit Pergola - all 4 sides fit up to 3 louvres and can be used in any combination required.  
Wall Mounted Pergola - see product spec for compatibility.  
**WS-LOUVC-12** - Charcoal



£5,995



£3,495



£450



£330

### Summit Pergola 3.0m x 6.0m

H 251cm W 595cm D 304cm WT 330kg

Floor area needs to be flat and level. Price is for frame only. Legs can be cut down to reduce the roof height as needed.\*  
\*Cutting down the legs must be carried out by the customer.  
Assembly service available. £495 per Pergola  
**WS-PERG103** - Charcoal

### Summit Wall Mounted Pergola 3.0m x 3.6m

H 251cm W 365cm D 304cm WT 135kg

Floor area needs to be flat and level. Price is for frame only. Legs can be cut down to reduce the roof height as needed.\*  
\*Cutting down the legs must be carried out by the customer.  
Assembly service available. £495 per Pergola  
**WS-PERGWM101** - Charcoal

### Summit Louvre 1.33m

H 238cm W 124cm D 12cm WT 23kg

To fit 4.0m sides on the Summit Pergola.  
For Summit Pergola - all 4 sides fit up to 3 louvres and can be used in any combination required.  
Not compatible with the Wall Mounted Pergola.  
**WS-LOUVC-133** - Charcoal

### Summit LED Roof Louvre

H 300cm W 17cm D 2cm WT 3kg

One remote control can operate multiple louvres.  
Various dimmable settings.  
Solar powered.  
**WS-SOLARLOU** - Charcoal



Wall mounted Pergola can fit Zip Blinds or Louvres on the front (3.6m side) only.

### Summit Manual Zip Blinds

Can be ordered individually & come in Charcoal/Slate.

- WS-PERGBBC-3-1** - 276cm Blind (fits 3.0m sides) £695
- WS-PERGBBC-3.6-1** - 337cm Blind (fits 3.6m sides) £795
- WS-PERGBBC-4-1** - 368cm Blind (fits 4.0m sides) £895

Zip blinds fit the following Pergolas:

- 3.0m x 3.6m** - Takes 2 x 276cm blinds & 2 x 337cm blind
- 3.0m x 4.0m** - Takes 2 x 276cm blinds & 2 x 368cm blind
- 3.0m x 6.0m** - Takes 6 x 276cm blinds
- 3.0m x 3.6m (Wall mounted)** - Takes 1 x 337cm blind

# Parasols

---

Westminster have a wide selection of parasols to suit all your garden requirements. This ranges from smaller, centre pole sunshades, to heavier-duty, cantilever parasols.

All our products in this collection are manufactured using high-quality materials, including an anti-stain and UV resistant canopy with either a robust aluminium or stainless-steel frame.



## Parasol Features



### Fade Resistant

Our parasol canopies are upholstered using 100% solution dyed acrylic. This means that the fabric yarns are coloured all the way through, creating a more fade-resistant material.



### Easy Care

Our fabric furniture is considered low maintenance. Dirt and stains can be cleaned using soapy water, or a mild bleach solution for more stubborn stains.



### Built to Last

Our parasols are made with the highest quality materials. We also offer all-weather parasol covers, to keep your sunshade in its best condition when not in use.

## Parasol Disclaimer

Parasol fabric can develop mould in excessively damp conditions and stains will appear if left under trees. Darker parasol fabric is more susceptible to fading than the lighter colours.

The guarantee does not cover fabric fading, therefore we recommend use of the included all weather cover when the parasol is not in use.

Please note: We strongly advocate the use of a base stand with all Westminster parasols.

Please ensure LED lighting is turned off fully before closing parasols. Always close parasols when not in use or unattended and do not use in windy conditions.



## Parashade Cantilevers

Exclusive to Westminster, the Parashade cantilever parasol is the perfect home or hospitality shade solution. The unprecedented design addition of Gust Busting Arms will also prevent any damage from occurring during high winds, the stainless steel ribs are designed to pop out under high pressure which protects the product from falling over and damaging the cantilever.

The cantilevers also have a Rib Spring system to ensure a tight canopy and the 3.0m round cantilever has a tilting mechanism, giving a number of shading angles. With such versatile features and a beautifully minimalist design, these Parashade cantilevers are robust and easy to use. A concrete freestanding base is included.



£1,595

### Parashade 2.1m Square Cantilever

H 245cm W 210cm WT 140kg

Parallel motion, easy opening and closing action.  
Marine grade 316 stainless steel & anodised aluminium arms.  
Gust Busting arms. Includes concrete base with wheels.

**SF-PARA-2.1SQ-218** - Stainless Steel/Slate

**SF-PARA-2.1SQ-005** - Stainless Steel/Natural



£1,795

### Parashade 3.0m Round Cantilever

H 245cm W 300cmØ WT 140kg

Parallel motion, easy opening and closing action, with tilt.  
Marine grade 316 stainless steel & anodised aluminium arms.  
Gust Busting arms. Includes concrete base with wheels.

**SF-PARA-3R-218** - Stainless Steel/Slate

**SF-PARA-3R-005** - Stainless Steel/Natural



### Gust Busting Arms

The Parashade cantilever parasol has an unprecedented design feature - Gust Busting Arms

If a strong gust of wind hits the cantilever, the stainless steel ribs will pop open, preventing the parasol from falling over, or damaging the parasol.

You can then simply pull the ribs back down and they clip back into place.

## Horizon Parasols

Illuminate your garden with our Horizon centre-pole parasols, featuring a charcoal colour frame, 48mm pole and solution-dyed acrylic canopy. The 8 aluminium canopy ribs also include integrated LED lights with two rechargeable USB packs, creating a stunning effect of light around the surrounding area. Open and close the canopy with ease with the simple crank handle mechanism.

The canopy material is made using an innovative technology which is resistant to fading, weather aggression, UV damage and biodegradation. The fabric also includes air vents to promote air circulation and suppress development of mould and mildew.



£595

### Horizon LED 2.5m Square Parasol

H 250cm W 250cm POLE 38mm WT 8kg

LED Lights in ribs with two rechargeable USB battery packs.  
Aluminium pole 48mm with tilting mechanism.  
2 piece pole with screw-in connector, with crank handle.

**TR-HORI2.5S-SL** - Charcoal/Slate

**TR-HORI2.5S-ST** - Charcoal/Stone



£695

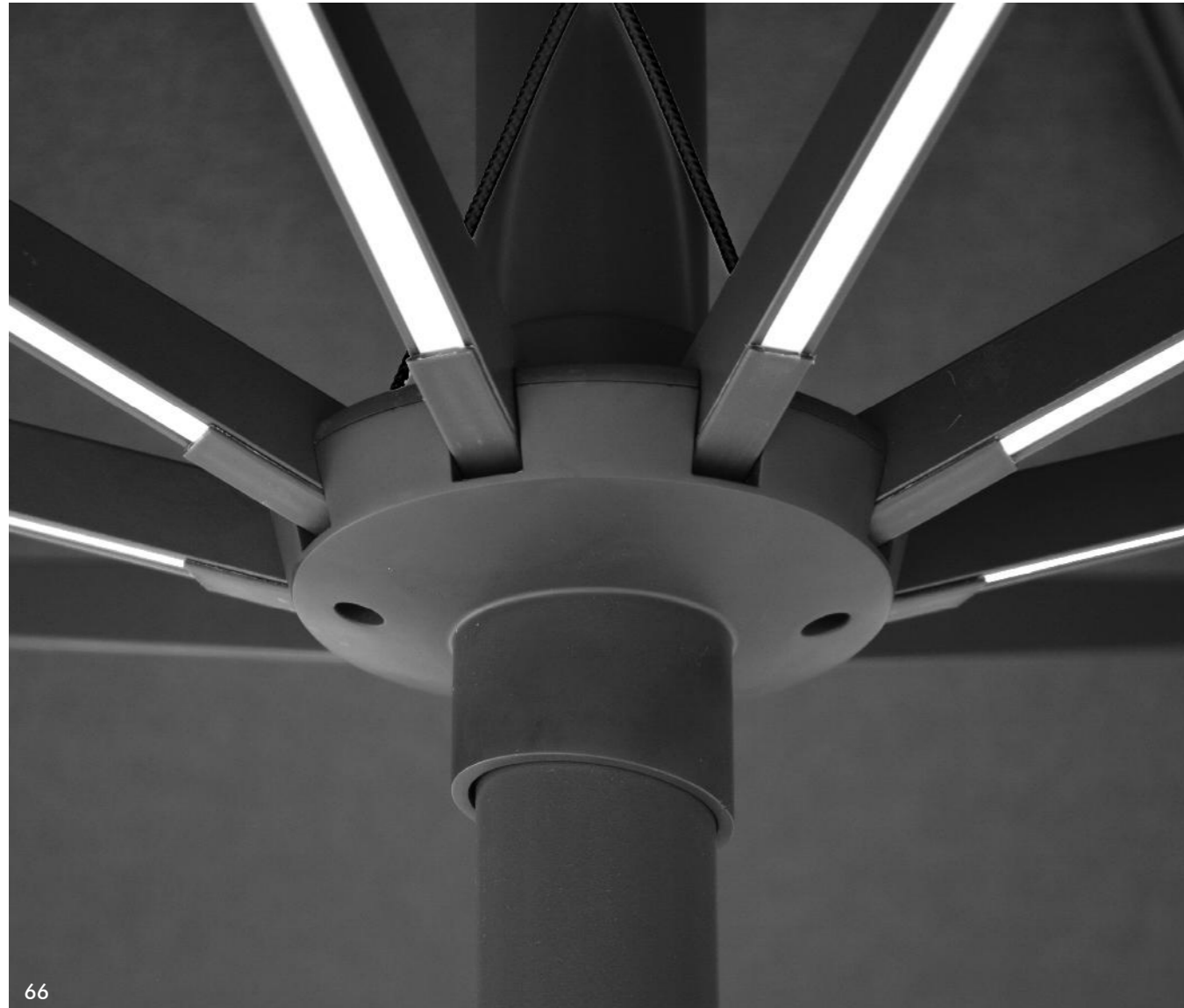
### Horizon LED 3.5mØ Round Parasol

H 270cm W 350cmØ POLE 48mm WT 14kg

LED Lights in ribs with two rechargeable USB battery packs.  
Aluminium pole 48mm with tilting mechanism.  
2 piece pole with screw-in connector, with crank handle.

**TR-HORI3.5R-SL** - Charcoal/Slate

**TR-HORI3.5R-ST** - Charcoal/Stone



£195

### Horizon 40kg Granite Base

H 10cm W 45cm D 45cm WT 40kg

This base stand is dark grey in colour and is made from Granite. This 40kg base stand is designed for use with the Horizon parasols. This base has a handle making it easy and safe to move.

**TR-BASE40**

## Twilight Parasols

Transform your outside space with our advanced, high-quality Twilight cantilever parasols. The flagship feature of our Twilight product is the beautiful solar-powered central LED Light and LED strips which stretch across each of the 8 ribs underneath the canopy cover. This integrated functionality is sure to extend your outdoor experience well into the night.

Other features include a front-to-back and side-to-side tilt function, with 360° rotation, shading you all day long as the sun moves. Please note the Twilight parasol will require a Westminster cantilever base. Perfectly matched with any of our dining, lounge or sofa ranges, this product is sure to raise your outdoor living experience to the next level.



£1,495

### Twilight LED 3.0m x 4.0m Parasol

H 300cm W 300cm D 400cm WT 40kg

LED Lights in ribs with two rechargeable USB battery packs. Deluxe Rectangular parasol canopy 3x4m with aluminium handle and crank.

**TR-TWIL3X4-ST** - Charcoal/Slate

**TR-TWIL3X4-SL** - Charcoal/Stone



£1,495

### Twilight LED 3.5mØ Round Parasol

H 300cm W 350cmØ WT 32kg

LED Lights in ribs with two rechargeable USB battery packs. Deluxe Round parasol canopy 3.5m with aluminium handle and crank, includes a tilting mechanism to change the angle of the canopy.

**TR-TWIL3.5-SL** - Charcoal/Slate

**TR-TWIL3.5-ST** - Charcoal/Stone



£395

### Twilight 120kg Granite Base

H 10cm W 80cm D 80cm WT 120kg

This base stand is dark grey in colour and is made from Granite. This 120kg base stand is designed for use with the Twilight Cantilever Parasols only. This base has 4 locking castors.

**TR-BASE120**



£95

### Twilight In Ground Base

H 61cm W 50cm D 50cm WT 30kg

Allows for more floor space by removing a traditional base. Base must be placed 62cm in the ground and must be level. Instructional video is on our website.

**WS-BASE08-HEAVY**



We offer a wide range of all weather covers to protect your furniture from the elements.

Please visit our website for all weather cover specifications.

**SHOP WITH US**

ONLINE [www.birstall.com](http://www.birstall.com) IN STORE



Showroom

Westminster Outdoor Living  
@  
BIRSTALL Garden & Leisure  
19-35 Sibson Road  
Birstall  
Leicestershire  
LE4 4DX

0116 267 7091  
[www.birstall.com](http://www.birstall.com)  
[westminster@birstall.com](mailto:westminster@birstall.com)  
[trade@birstall.com](mailto:trade@birstall.com)