

BIRSTALL SECTIONAL CONCRETE GARAGES (Area 2)

AREA 2

2024 Price List For Delivery & Assembly to the following UK Postcodes:

B, CA, CB, DY, LL, LU
MK, NE, NN, NR, OX, PE
SG, SY, TF, WR, WS, WV



www.birstall.com



SALE

Garage Prices Include: Multi-Spa Stone Finish, 2 Pane Fixed Window
Delivery, up & over door(s) VAT & FREE ASSEMBLY

Shop Online

SINGLE PENT GARAGES

STANDARD PENT ROOF



Rear Guttering
£8 Per Foot

Width→ Length↓	8' 5"	9' 5"	10' 5"	12' 5"	14' 5"
	2.57m	2.87m	3.17m	3.78m	4.39m
Door(s) Inc.	1 x 7' wide <i>Standard</i> Canopy up & over	1 x 8' wide <i>Standard</i> Canopy up & over	1 x 8' wide <i>Standard</i> Canopy up & over	1 x 8' wide <i>Standard</i> Canopy up & over	1 x 8' wide <i>Standard</i> Canopy up & over
Window(s) Inc.	1 x 4' Fixed	1 x 4' Fixed	1 x 4' Fixed	1 x 4' Fixed	1 x 4' Fixed
14' 3"	4.27m	£2,839	£3,149	£3,389	£3,729
16' 3"	4.88m	£2,909	£3,239	£3,489	£3,839
18' 3"	5.59m	£3,019	£3,329	£3,669	£4,139
20' 3"	6.10m	£3,349	£3,549	£3,929	£4,369
22' 3"	6.71m	£3,569	£3,809	£4,179	£4,519
24' 3"	7.32m	£3,759	£3,979	£4,339	£4,689

DOUBLE PENT GARAGES

16' 5"	18' 5"	20' 5"	22' 5"	24' 5"
5.00m	5.61m	6.22m	6.83m	7.44m
2 x 7' wide <i>Standard</i> Canopy up & over	2 x 8' wide <i>Standard</i> Canopy up & over	2 x 8' wide <i>Standard</i> Canopy up & over	2 x 8' wide <i>Standard</i> Canopy up & over	2 x 8' wide <i>Standard</i> Canopy up & over
2 x 4' Fixed	2 x 4' Fixed	2 x 4' Fixed	2 x 4' Fixed	2 x 4' Fixed
£5,059	£5,339	£5,689	n/a	n/a
£5,159	£5,439	£5,779	n/a	n/a
£5,599	£6,029	£6,379	n/a	n/a
£5,889	£6,409	£6,779	n/a	n/a
£6,199	£6,789	£7,189	n/a	n/a
£6,529	£7,219	£7,639	n/a	n/a

SINGLE APEX GARAGES

STANDARD APEX ROOF



Side Guttering
£8 Per Foot

Width→ Length↓	8' 5"	9' 5"	10' 5"	12' 5"	14' 5"
	2.57m	2.87m	3.17m	3.78m	4.39m
Door(s) Inc.	1 x 7' wide <i>Standard</i> Canopy up & over	1 x 8' wide <i>Standard</i> Canopy up & over	1 x 8' wide <i>Standard</i> Canopy up & over	1 x 8' wide <i>Standard</i> Canopy up & over	1 x 8' wide <i>Standard</i> Canopy up & over
Window(s) Inc.	1 x 4' Fixed	1 x 4' Fixed	1 x 4' Fixed	1 x 4' Fixed	1 x 4' Fixed
14' 3"	4.27m	£2,869	£3,209	£3,449	£3,789
16' 3"	4.88m	£2,939	£3,269	£3,519	£3,859
18' 3"	5.59m	£3,039	£3,359	£3,699	£4,139
20' 3"	6.10m	£3,379	£3,579	£3,969	£4,409
22' 3"	6.71m	£3,609	£3,849	£4,229	£4,579
24' 3"	7.32m	£3,809	£4,019	£4,389	£4,769
Extra 2' length	+ £230	+ £240	+ £260	+ £280	+ £300

DOUBLE APEX GARAGES

16' 5"	18' 5"	20' 5"	uPVC Fascias Pent or Apex
5.00m	5.61m	6.22m	
2 x 7' wide <i>Standard</i> Canopy up & over	2 x 8' wide <i>Standard</i> Canopy up & over	2 x 8' wide <i>Standard</i> Canopy up & over	
2 x 4' Fixed	2 x 4' Fixed	2 x 4' Fixed	8' Wide £470
£5,109	£5,409	£5,759	9' Wide £475
£5,199	£5,459	£5,809	10' Wide £480
£5,649	£6,069	£6,329	12' Wide £485
£5,939	£6,449	£6,839	14' Wide £490
£6,189	£6,859	£7,289	16' Wide £585
£6,609	£7,289	£7,729	18' Wide £590
+ £310	+ £350	+ £380	20' Wide £595



Battery Garages



Double Garage With 2 Doors (larger doors available)

SIDE DOORS

Timber Personal Door	2' Wide (2' 6" Frame)	£295
Timber Personal Door extra wide (Double Door)	3' 6" Wide (4' Frame)	£565
Steel Personal Door for extra security	2' 8" Wide (3' Frame)	£390
Steel Personal Door for extra security	3' 8" Wide (4' Frame)	£775

BRICK FRONT

BRICK FRONT Option (Red or Buff)		
Garage Width		
8' 5" & 9' 5"	Brick Front	£239
10' 5"	Brick Front	£269
16' 5" & 18' 5"	Brick Front	£349
19' & 20' 5"	Brick Front	£399

UP & OVER DOOR UPGRADES

7' wide Georgian canopy door	£245
7' wide Standard framed & retractable door	POA
8' wide Standard framed & retractable door (Garages 9' 6" wide+)	POA
8' wide Georgian canopy door (Garages 9' 6" wide+)	£310
9' wide Standard retractable door (Garages 10' 6" wide+)	£850
9' wide Georgian canopy door (Garages 10' 6" wide+)	POA
10' wide Standard framed & retractable door (Garages 12' 6" wide +)	£1,500
10' wide Georgian framed & retractable door (Garages 12' 6" wide +)	POA
12' wide Standard framed & retractable door (Garages 14' 6" wide +)	POA
12' wide Georgian framed & retractable door (Garages 14' 6" wide +)	POA
14' wide Standard framed & retractable door (Garages 16' 6" wide +)	POA
14' wide Georgian framed & retractable door (Garages 16' 6" wide +)	POA
Additional Standard canopy door to the rear (Apex only) (7' wide door)	£450
Additional Standard canopy door to the rear (Apex only) (8' wide door)	£500
Offset door (moving up & over door to extreme left or right)	£40
Convert up & over door to timber opening doors (solid or glazed)	FREE
Exchange up & over door for timber or steel personal door (workshop)	£100

EXTRA HEIGHT for 4 x 4s & Taller Vehicles

EXTRA HIGH PENT or APEX	
7' High To Eaves	Garage +15%
6' 6" Concrete Panels + 6" Timber Skirt	
Inc 7' Tall Timber doors with 7' high clearance or 7' Tall up & over door(s) with 6' 8" clearance	
7' 6" High To Eaves	Garage +25%
Constructed with 6' 6" High Concrete Panels	
Plus 12" of Timber skirting on top	
Inc 7' 6" Tall Timber doors with 7' 6" high clearance or 7' 6" Tall up & over door(s) with 7' 2" clearance	
8' High To Eaves	Garage + 50%
Constructed with 6' 6" High Concrete Panels	
Plus 18" of Timber skirting on top	
Inc 8' Tall Timber doors with 8' high clearance or 8' wide x 8' tall up & over 7' 8" clear	
	£ 300

EXTRAS

Extra fixed two-pane Timber window (4' x 2')	£90
uPVC fixed two-pane window (4' x 2')	£310
Fitted PVC guttering & fallpipe per foot	£8
Translucent roof sheets (each)	£50

AUTOMATIC

REMOTE ELECTRIC DOOR SYSTEMS	
For framed & retractable doors only	
For self assembly (supplied with remote)	
For 7' to 14' wide doors	
	£500

GARAGE BASES must be flat, level & square. 6" longer & 6" wider than external sizes stated above

Birstall Garden & Leisure Sibson Road Birstall Leicestershire LE4 4DX
Call (0116) 267 7091 Click www.birstall.com Fax (0116) 267 1318 or visit our showground

BIRSTALL SECTIONAL CONCRETE GARAGES (Area 2)

2024 Price List For Delivery & Assembly to the following UK Postcodes:

B, CA, CB, DY, LL, LU
MK, NE, NN, NR, OX, PE
SG, SY, TF, WR, WS, WV

Garage Prices Include: Multi-Spa Stone Finish, 2 Pane Fixed Window

Delivery, up & over door(s) VAT & FREE ASSEMBLY


Shop Online


www.birstall.com

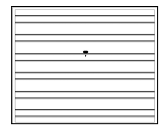


AREA 2

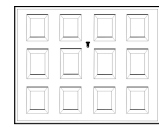


SINGLE PENT GARAGES	ULTIMATE PENT ROOF	Width→	8' 5"	9' 5"	10' 5"	12' 0"	14' 5"	16' 5"	18' 5"	20' 5"	22' 5"	24' 5"	
		Length↓	2.57m	2.87m	3.17m	3.66m	4.39m	5.00m	5.61m	6.22m	6.83m	7.44m	
 Prices Include: Brick Front PVCu Fascias PVCu Window Steel Side Door Std Roof Sheets	Door(s) Inc.	1 x 7' wide	1 x 8' wide	1 x 8' wide	1 x 8' wide	1 x 10' wide	2 x 7' wide	2 x 8' wide	2 x 8' wide	2 x 8' wide	2 x 8' wide	2 x 9' wide	
		Standard	Standard	Standard	Standard	Standard	Standard	Standard	Standard	Standard	Standard	Standard	
		Canopy	Canopy	Canopy	Canopy	Canopy	Retractable	Canopy	Canopy	Canopy	Canopy	Canopy	
		up & over	up & over	up & over	up & over	up & over	up & over	up & over	up & over	up & over	up & over	up & over	
	Window(s) Inc.	1 x 4' Fixed	1 x 4' Fixed	1 x 4' Fixed	1 x 4' Fixed	1 x 4' Fixed	2 x 4' Fixed	2 x 4' Fixed	2 x 4' Fixed	2 x 4' Fixed	2 x 4' Fixed	2 x 4' Fixed	2 x 4' Fixed
		14' 3"	4.27m	£3,669	£4,129	£4,359	£5,159	n/a	£6,419	£7,489	£7,879	n/a	n/a
	16' 3"	4.88m	£4,029	£4,469	£4,699	£5,279	n/a	£6,999	£7,709	£8,129	n/a	n/a	
	18' 3"	5.59m	£4,359	£4,699	£4,849	£5,509	n/a	£7,459	£8,079	£8,589	n/a	n/a	
	20' 3"	6.10m	£4,589	£4,839	£5,019	£5,849	n/a	£8,009	£8,479	£9,049	n/a	n/a	
	22' 3"	6.71m	£4,939	£5,049	£5,269	£6,199	n/a	£8,339	£8,799	£9,369	n/a	n/a	
	24' 3"	7.32m	£5,109	£5,279	£5,619	£6,429	n/a	£8,709	£9,409	£9,829	n/a	n/a	

SINGLE APEX GARAGES	ULTIMATE APEX ROOF	Width→	8' 5"	9' 5"	10' 5"	12' 0"	14' 5"	16' 5"	18' 5"	20' 5"
		Length↓	2.57m	2.87m	3.17m	3.66m	4.39m	5.00m	5.61m	6.22m
 Prices Include: Brick Front PVCu Fascias PVCu Window Steel Side Door Red Roof Sheets 12.5° Pitch	Door(s) Inc.	1 x 7' wide	1 x 8' wide	1 x 8' wide	1 x 8' wide	1 x 10' wide	2 x 7' wide	2 x 8' wide	2 x 8' wide	
		Georgian	Georgian	Georgian	Georgian	Georgian	Georgian	Georgian	Georgian	
		Canopy	Canopy	Canopy	Canopy	Canopy	Retractable	Canopy	Canopy	
		up & over	up & over	up & over	up & over	up & over	up & over	up & over	up & over	
	Window(s) Inc.	1 x 4' Fixed	1 x 4' Fixed	1 x 4' Fixed	1 x 4' Fixed	1 x 4' Fixed	2 x 4' Fixed	2 x 4' Fixed	2 x 4' Fixed	
		14' 3"	4.27m	£4,099	£4,609	£4,919	£5,639	n/a	£6,769	£7,189
	16' 3"	4.88m	£4,409	£4,789	£5,229	£5,779	n/a	£7,279	£7,619	£8,029
	18' 3"	5.59m	£4,719	£4,949	£5,379	£5,949	n/a	£7,699	£7,979	£8,489
	20' 3"	6.10m	£4,919	£5,229	£5,539	£6,259	n/a	£7,999	£8,489	£9,029
	22' 3"	6.71m	£5,109	£5,429	£5,739	£6,439	n/a	£8,279	£8,879	£9,519
	24' 3"	7.32m	£5,329	£5,639	£6,049	£6,639	n/a	£8,579	£9,329	£10,049
	Extra 2' length		+ £230	+ £240	+ £260	+ £280	n/a	+ £310	+ £350	+ £390



Standard Door
Included with Pent



Georgian Door
Included with Apex



Steel Side Door
Included



Real Brick Front
Included



Double Glazed PVCu
Window(s) Included



Ultimate Double Apex
Shown as Standard

DOORS	Steel Personal Door	2' 6" Wide (3' Frame)	FREE
	Upgrade to wider personal door		
	Steel Personal Door (Extra Wide)	3' 6" Wide (4' Frame)	£275

UP & OVER DOOR UPGRADES	7' wide Georgian canopy door		£245
		7' wide Standard framed & retractable door	POA
	8' wide Standard framed & retractable door (Garages 9' 6" wide+)	POA	
	8' wide Georgian canopy door (Garages 9' 6" wide+)	£310	
	9' wide Standard canopy door (Garages 10' 6" wide+)	£680	
	9' wide Georgian canopy door (Garages 10' 6" wide+)	POA	
	10' wide Standard framed & retractable door (Garages 12' 6" wide +)	£1,300	
	10' wide Georgian framed & retractable door (Garages 12' 6" wide +)	POA	
	12' wide Standard framed & retractable door (Garages 14' 6" wide +)	£1,400	
	12' wide Georgian framed & retractable door (Garages 14' 6" wide +)	POA	
	14' wide Standard framed & retractable door (Garages 16' 6" wide +)	£1,550	
	14' wide Georgian framed & retractable door (Garages 16' 6" wide +)	POA	
	Additional Standard canopy door to the rear (Apex only) (7' wide door)	£450	
	Additional Standard canopy door to the rear (Apex only) (8' wide door)	£500	
	Convert up & over door to timber opening doors (solid or glazed)	£200	
	Exchange up & over door for a timber personal door (workshop)	£200	

EXTRAS	Extra fixed one-pane window Double Glazed PVCu (2' x 2')	£120
	Extra fixed two-pane window Double Glazed PVCu (4' x 2')	£240
	Extra opening one-pane window Double Glazed PVCu (2' x 2')	£135
	Extra opening two-pane window Double Glazed PVCu (4' x 2')	£270

The ULTIMATE range of garages include

Stylish headboards, side fascia boards
4' double glazed fixed window(s) gutters & fallpipe
all made from the finest quality white

Maintenance Free PVCu
Genuine Brick pillars to the front and a
Steel personal door are all included as standard

Ultimate Pent Roof Garages
Have standard Grey Cement Fibre roofing sheets
and Standard up & over door(s)

Ultimate Apex Roof Garages
Have Spanish Red roofing sheets & Ridge
and include Georgian up & over door(s)

10 YEAR STRUCTURAL GUARANTEE on all models
Please note slightly different width from our std. range

EXTRA HIGH PENT or APEX

TALL

7' High To Eaves
6' 6" Concrete Panels + 6" Timber Skirt
Inc 7' Tall Timber doors with 7' high clearance
or 7' Tall up & over door(s) with 6' 8" clearance

Garage +15%

AUTOMATIC

REMOTE ELECTRIC DOOR SYSTEMS

For framed & retractable doors only
For self assembly (supplied with remote)
For 7' to 14' wide doors

£500

GARAGE BASES must be flat, level & square. 6" longer & 6" wider than external sizes stated above

Birstall Garden & Leisure Sibson Road Birstall Leicestershire LE4 4DX
Call (0116) 267 7091 Click www.birstall.com Fax (0116) 267 1318 or visit our showground